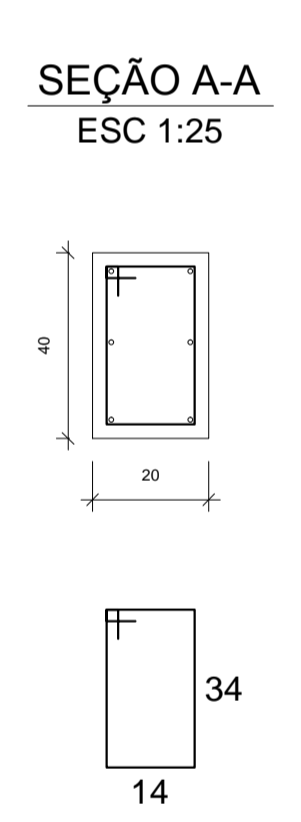
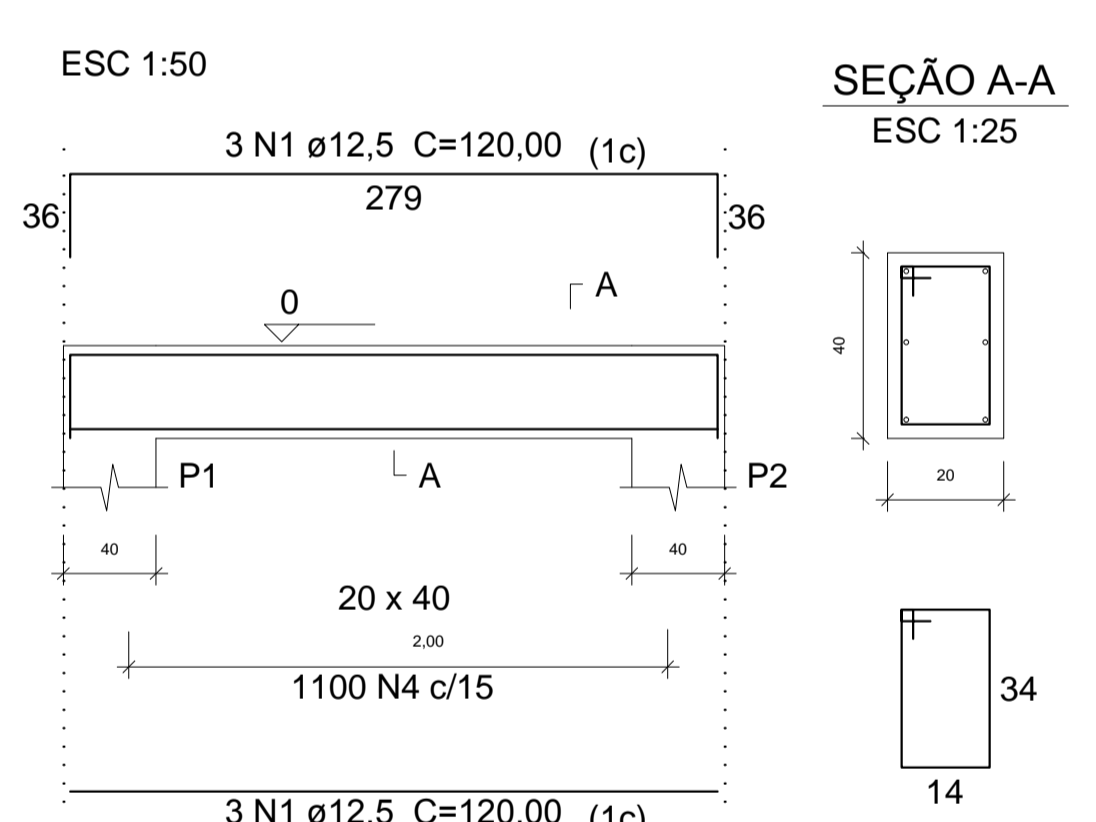
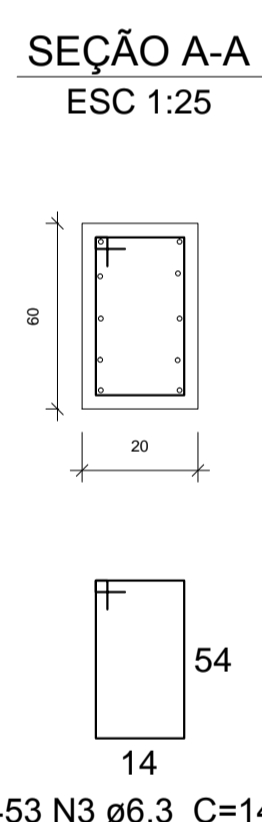
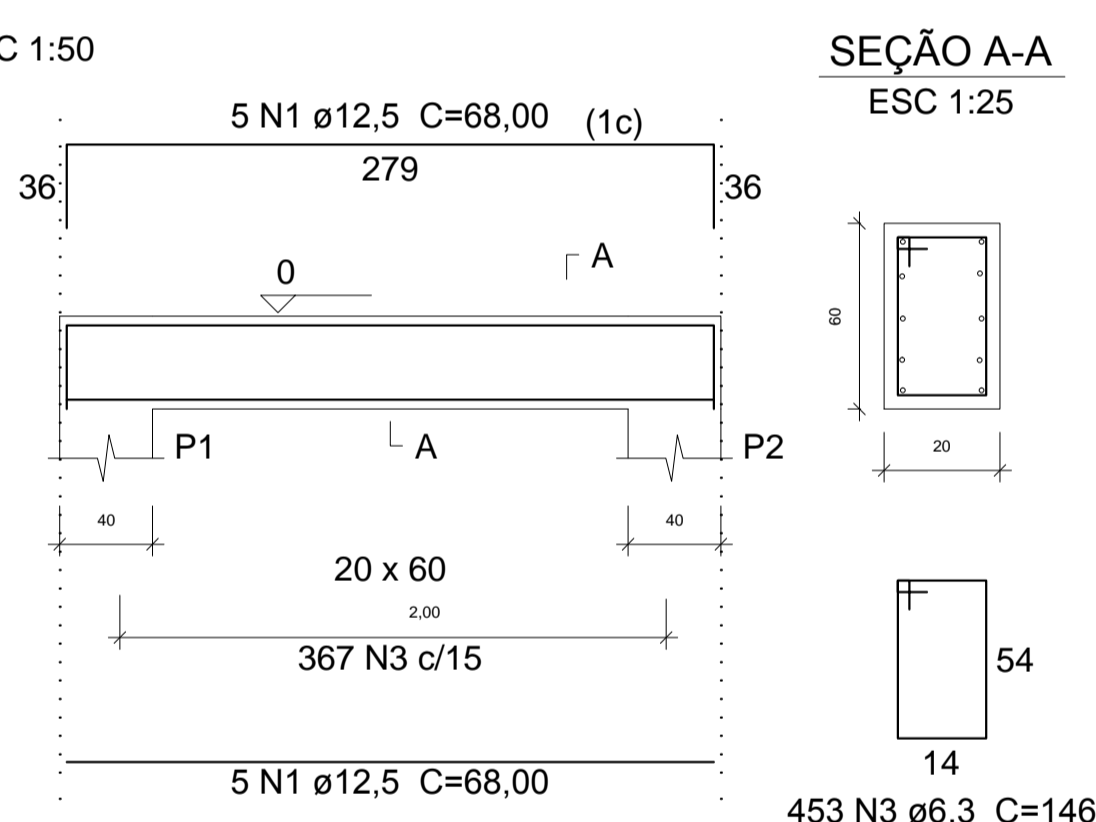
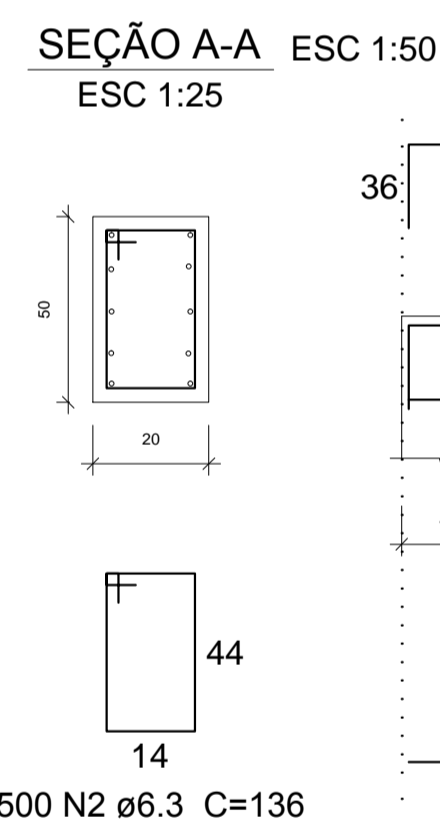
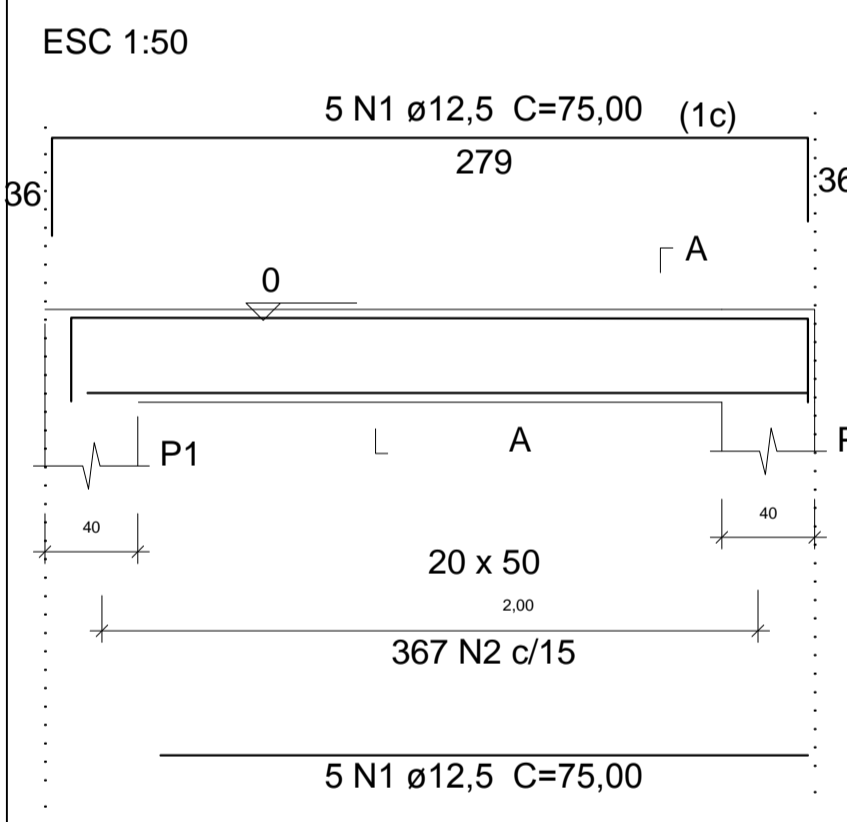


V2 20x50- 75 m

V2 20x60- 68 m

V3 20x40 (120 m)



Relação do aço

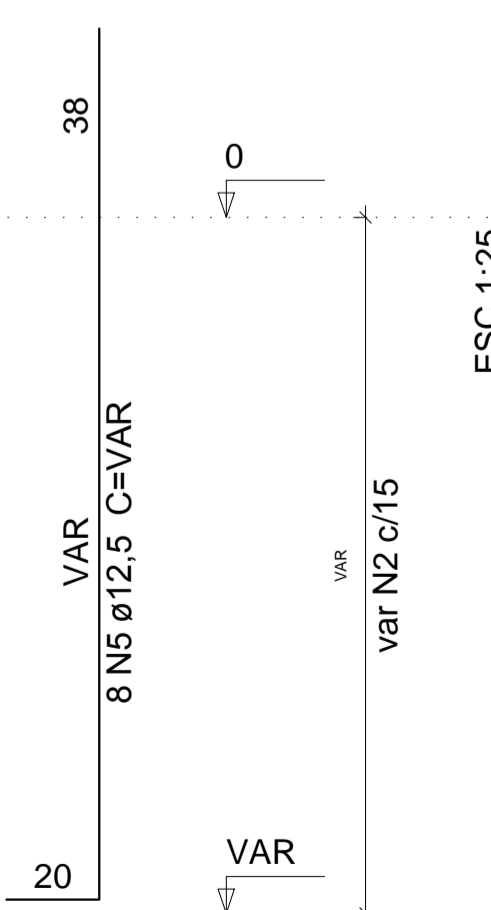
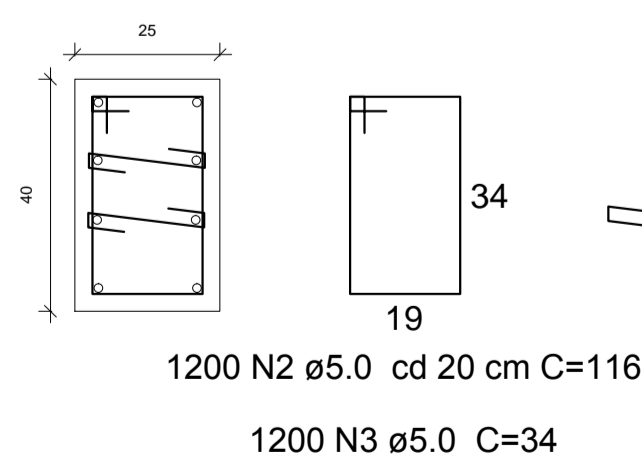
AÇO	N	DIAM	Q	UNIT (m)	C.TOTAL (m)
CA50	1	12,5	10	75,00	750
	1	12,5	10	68,00	680
	1	12,5	6	120	720
	2	5,0	500	1,36	680
	3	5,0	453	1,46	661
	4	5,0	800	1,16	928

Resumo do aço

AÇO	DIAM	C.TOTAL (m)	PESO (kg)
CA50	12,5	2150	2150
	5,0	2269	350
PESO TOTAL			2274 kg

Pilares 25x40(37x) - 240 m

BALDRAME - L1 ESC 1:20



Relação do aço

AÇO	N	DIAM	Q	UNIT (m)	C.TOTAL (m)
CA50	1	12,5	8	240	1920
	2	5,0	1200	1,16	1390
	3	5,0	2400	0,34	816

Resumo do aço

AÇO	DIAM	C.TOTAL (m)	PESO (kg)
CA50	12,5	1920	1920
	5,0	2208	340
PESO TOTAL			2260kg

**CONCRETO FCK 30 MPA
BLOCOS DE CONCRETO CHEIOS COM
CONCRETO MAGRO 1:4,5:4,5**

ASSINATURAS :	
FERNANDO GONÇALVES DOS SANTOS PREFEITO MUNICIPAL	
VANESSA MONTES MACHADO ENG. CIVIL - CREA: 70595-D/MG	
TÍTULO :	
Projeto Estrutural Muro Rua José Eugênio- MURO MAIOR	
LOCAL : RUA JOSÉ EUGÊNIO- CENTRO - LARANJAL - MG.	
CONTEÚDO :	QUADRO DE ÁREAS :
SAPATAS, VIGAS E COLUNAS	ÁREA MURO = 489,16M²
REV.:	REVISÃO 01
PROPRIETÁRIO : PREFEITURA MUNICIPAL DE LARANJAL - CNPJ: 17.947.615-0001/22	
FRANCHA : 03/03	FORMATO : A1 INTERNACIONAL
ESCALAS : s/ escala	DATA : 20/01/2022